



Centre County Recycling & Refuse Authority
253 Transfer Rd.
Bellefonte, PA 16823
(814) 238-7005
ccra@centrecountyrecycles.org
www.centrecountyrecycles.org

Hours of Operation
Transfer Station
Monday - Saturday, 8:00 am to 4:00 pm
Recycling Processing Facility
Monday - Friday, 8:00 am to 4:00 pm

Winter 2017
Volume 6, Issue 4

Centre County RECYCLES

Poster Contest Winners Announced

This fall, CCRRA, Weis Markets and the Centre Daily Times sponsored a "Reduce, Reuse, Recycle, Read" poster contest for all 5th grade students in Centre County.

We received hundreds of entries and a panel of judges chose 15 winning posters. We would like to congratulate our 15 winners (pictured below) for their amazing artwork and dedication to preserving our environment.

All 15 winning posters were made into a 2018 calendar that will be distributed to all Centre County 5th grade students. In addition, the calendar is available at all 5 Centre County Weis Markets stores (while supplies last).

The calendar was inserted into the November 16 issue of the CDT.

Each of the 15 students have received a \$25.00 Weis Markets gift card and will receive a Little Free Library for their school this spring.

Check page 2 for more winning posters.

Congratulations once again to all of our winners.



The poster above was created by Emily Lovrak, 5th grade student at Pleasant Gap Elementary School.



Back row: Isabel Olson, Gray's Woods Elem; Poppy Rusca, Park Forest Elem; Sena Andrews, Mountaintop Area Elem; Marinn Peters, Penns Valley Intermediate; Emma Haagen, Marion Walker Elem; Taylor Brown, Marion Walker Elem; Lillian Hodges, CLC Charter School; Jade Brown, Pleasant Gap Elem.

Front row: Madison Stimer, Port Matilda Elem; Hannah Rose Craig, OLV Elem; Cedric Bagwell, Benner Elem, Blake Wheeler, Wingate Elem, Ally Duncan, Gray's Woods Elem, Emily Lovrak, Pleasant Gap Elem.

Missing from picture: Erika Lucas, Philipsburg-Osceola Middle School.

Holiday Recycling Guide



Be environmentally friendly this holiday season. Check out the tips below on what to do with cardboard, wrapping paper and Christmas trees.

Corrugated Cardboard Boxes

Corrugated cardboard boxes can be recycled if they are flattened and free of all "peanuts." Curbside customers can place flattened boxes beside their curbside recycling bin. Residents may also bring their cardboard boxes to any drop-off recycling container labeled "Corrugated Cardboard".

Wrapping Paper & Gift Boxes

Gift boxes and non-metallic wrapping paper can be recycled. All CCRRA curbside recycling customers can recycle their gift boxes, non-metallic wrapping and tissue paper with their curbside recyclables. Please bag these with mixed paper. Non-curbside customers wishing to recycle gift boxes, non-metallic wrapping paper and tissue paper can bring it to any drop-off recycling container labeled for "Mixed Paper."

For a recycling drop-off location nearest you, call our office at 238-7005 or visit our website, www.centrecountyrecycles.org.

Christmas Trees

Be sure to check with your local municipality for Christmas tree recycling options.



Buy Recycled This Season

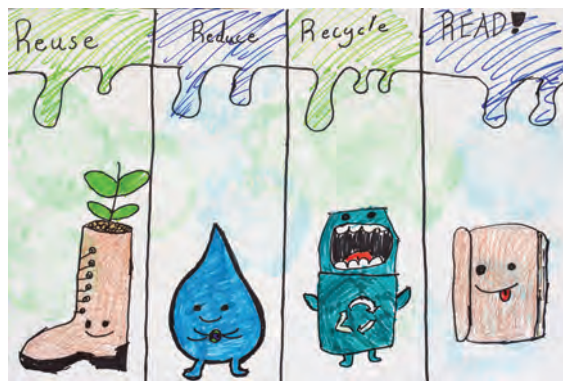
Purchase holiday cards and wrapping paper that are labeled "made from recycled material" and better yet labeled made from "post-consumer" recycled material. Look for at least 30% recycled content.

Poster Contest Winners Announced

Continued from Page 1. Don't forget to pick up a 2018 calendar, available free of charge at all 5 Centre County Weis Markets stores, to see all of the winning posters.



The poster above was created by Poppy Rusca, 5th grade student at Park Forest Elementary School.



The poster above was created by Cedric Bagwell, 5th grade student at Benner Elementary School.



The poster above was created by Marinn Peters, 5th grade student at Penns Valley Intermediate School.

Calendar of Events/Holiday Collection Schedules

2018 Centre County Recycling & Refuse Authority Board Meetings

Meetings begin at 5:30 pm unless otherwise publicized. Meetings are held at the CCRRA Office, 253 Transfer Road, Bellefonte.

- January 8
- February 28
- March 28
- April 25



Professional Recyclers of Pennsylvania Certification Classes

Certification classes are sponsored by PROP. Visit www.proprecycles.org for details.

April 11-12, 2018

Waste Audit
Commercial Recycling
Villanova University



**PENNSYLVANIA
RECYCLING
PROFESSIONAL
CERTIFICATION**

State College Borough Holiday Collection Schedule

Holiday	Monday	Tuesday	Wednesday	Thursday
Christmas Holiday Week of December 25	No Bulk/Brush Collection	Regular Collection	Regular Collection	Regular Collection
New Year's Week of January 1	No Bulk/Brush Collection	Regular Collection	Regular Collection	Regular Collection

Bellefonte Borough Holiday Recycling Schedule

Holiday	Normal Dates for Recycling Collection	Alternate Dates for Recycling Collection
Christmas Holiday	Monday, December 25 Tuesday, December 26	Wednesday, December 27 Thursday, December 28
New Year's Day	Monday, January 1	Wednesday, January 3

Centre Region COG Holiday Collection Schedule

The following applies to residents living in the Townships of Benner, College, Ferguson, Harris & Patton.

Christmas Day; December 25 - Recycling collection will be delayed one day from Monday on, for the rest of the week (recycling normally collected on Monday will be collected on Tuesday, and so on through the week).

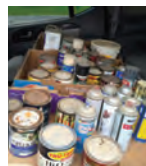
New Year's Day; January 1 - Recycling collection will be delayed one day from Monday on, for the rest of the week (recycling normally collected on Monday will be collected on Tuesday, and so on through the week).

**For all other municipalities, please contact your trash hauler for a list of possible holiday delays.*

Save the Date - April 27-28, 2018 Household Hazardous Waste Collection Event

Next year's HHW Collection event will be held on April 27-28. These are the days to properly dispose of household items that are hazardous, corrosive, reactive, toxic and flammable. This includes items such as: insecticides, weed killers, pool chemicals, cleaners, poisons, oil based paints, CFL bulbs, fluorescent tubes and most other chemicals from households only.

- Dates:** Friday, April 27, from 9:00 am - 5:00 pm
Saturday, April 28, from 8:00 am - 2:00 pm
- Location:** 253 Transfer Road, Bellefonte PA 16823
- Cost:** Free



GUIDE TO CURBSIDE RECYCLING



MIXED PAPER, PAPERBOARD, MAGAZINES & NEWSPAPER

Must be bagged or bundled together or they will not be accepted. Bag shredded paper. Place inside bin.



PLASTIC - BOTTLES, JUGS & JARS

Rinse containers. Lids and labels acceptable.



GLASS - BOTTLES, JUGS & JARS

Rinse containers. Lids and labels acceptable.



CORRUGATED CARDBOARD

Break down all cardboard boxes. Place beside bin.



STEEL & ALUMINUM - CANS & FOIL

Rinse and remove food residue. Labels acceptable.



NOT IN YOUR RED BIN

- Batteries
- Styrofoam™
- Paper Plates/Cups
- Glassware/Ceramics
- Miscellaneous Plastics



WHEN IN DOUBT, CHECK IT OUT



814.238.7005

www.centrecountyrecycles.org

Centre County Recycling & Refuse Authority

Chair
Dave Pensak

Vice Chair
Dennis Hameister

Secretary
Richard Stehouwer

Treasurer
Trilby Mayes

Board Member
Irv Hoy

Board Member
Mark Henry

Board Member
Jenn Shufan

Executive Director
Ted W. Onufrak

**Deputy Executive Director/
Recycling Coordinator**
Joanne Shafer

Operations Manager
Regan Hosterman

Fiscal Manager
Pamela Faust

Administrative Coordinator
David Immel

Education Coordinator
Amy Schirf

Ordinance Enforcement Officer
Rod Fye

Commercial Recycling Coordinator
Mimi Cooper

Commercial Recycling Coordinator
Ed Hicks

Clip and post on your refrigerator!

Did You Know?

You can now buy State College Borough Compost at CCRRA. The cost is \$6.00 per 40 lb bag. Just ask our Scale Operator for details and we will even load the bags in your vehicle. All proceeds benefit the Authority's Education Endowment Fund.



Centre County Recycles is a quarterly newsletter published for Centre County residents as a source of information regarding recycling and environmental issues. Centre County Recycles is printed on 30% RECYCLED CONTENT PAPER with soybean based inks AND IS RECYCLABLE.



This publication is partially funded by an Act 101 Recycling Grant through www.depweb.state.pa.us